



# Security and resilience for eHealth Infrastructures and Service

Dimitra Liveri

Secure Infrastructures and Services Unit - ENISA

European Union Agency For Network And Information Security



# Securing Europe's Information society

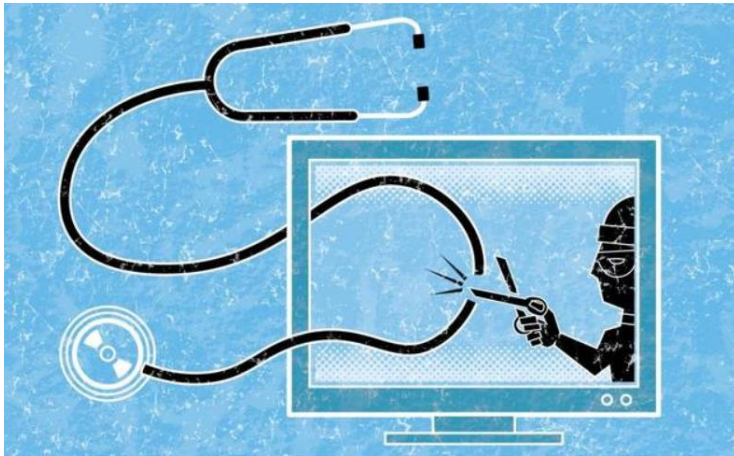


# Positioning ENISA activities

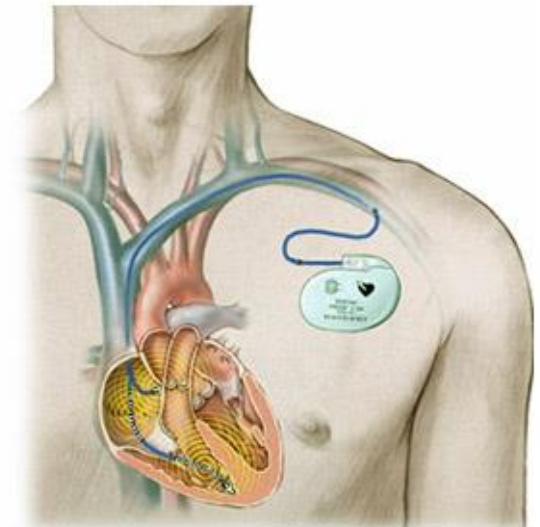




# What would happen if...



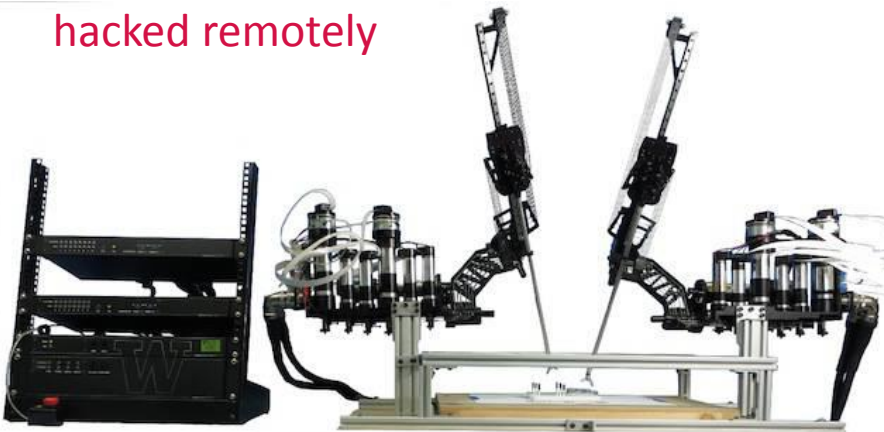
Major outage causing downgrading of operations for more than 12hrs in hospital



## Hacking the Heart

Pacemaker hacked wirelessly (mannequin lost life indicators)

Surgical tele-operated robot hacked remotely



# Predicting the future: Hospitals under attack



At least 19 hospitals were infected with ransomware in Q1 and Q2.



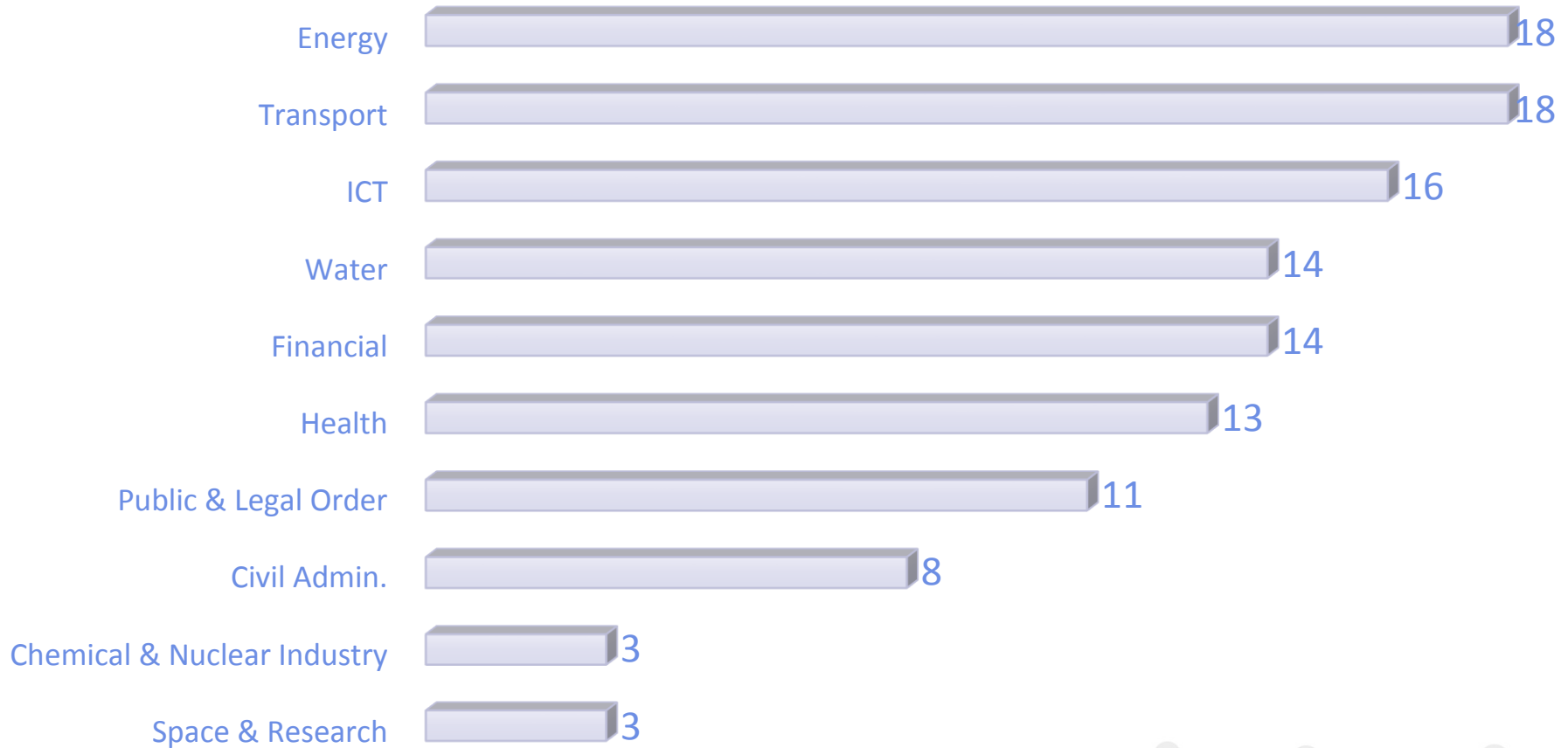
A related group of Q1 attacks on hospitals generated \$100,000 in ransom payments.



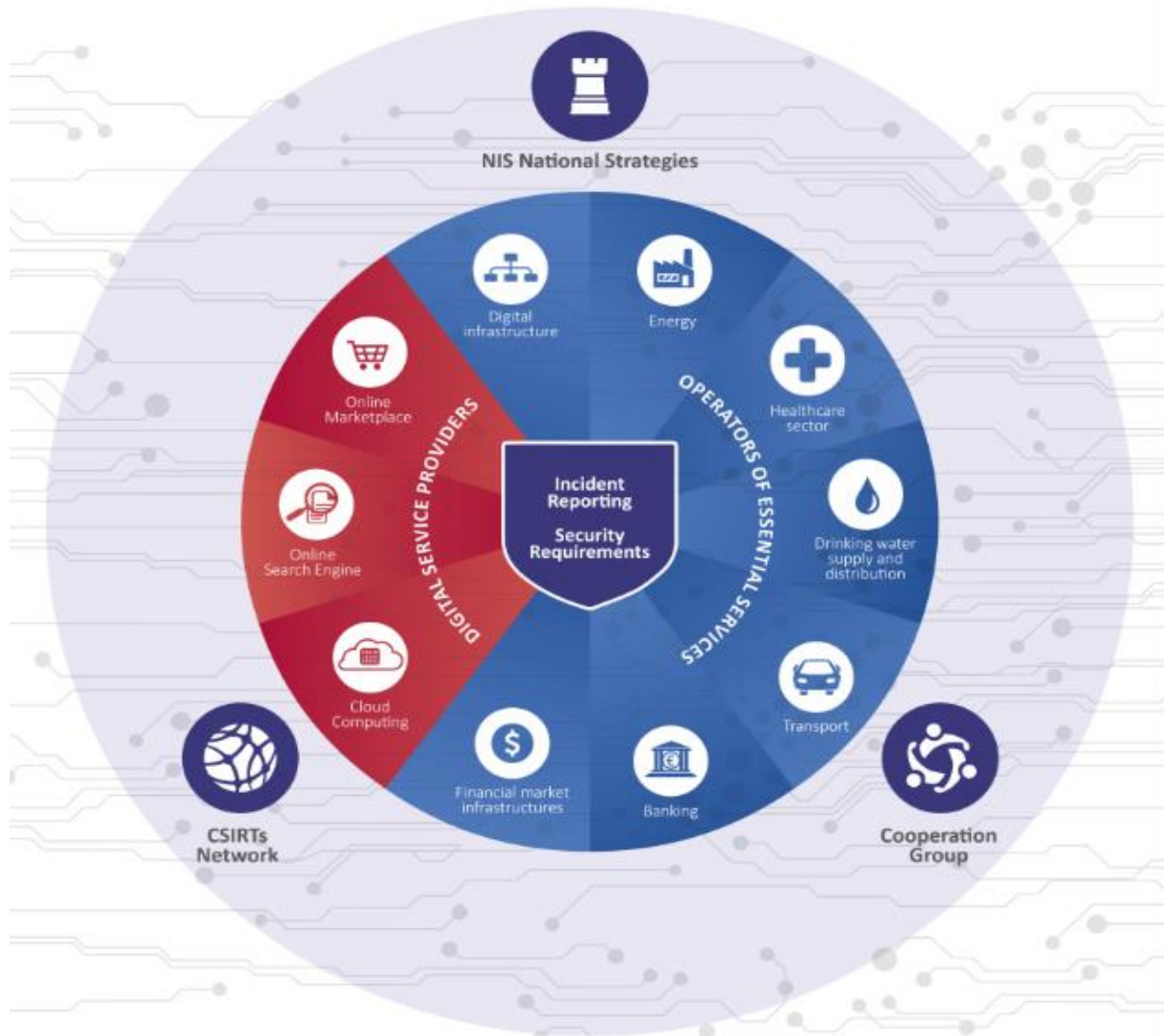
# Critical Sectors in the EU



**Critical Sectors identified by 17 examined Member States and 1 EFTA.**



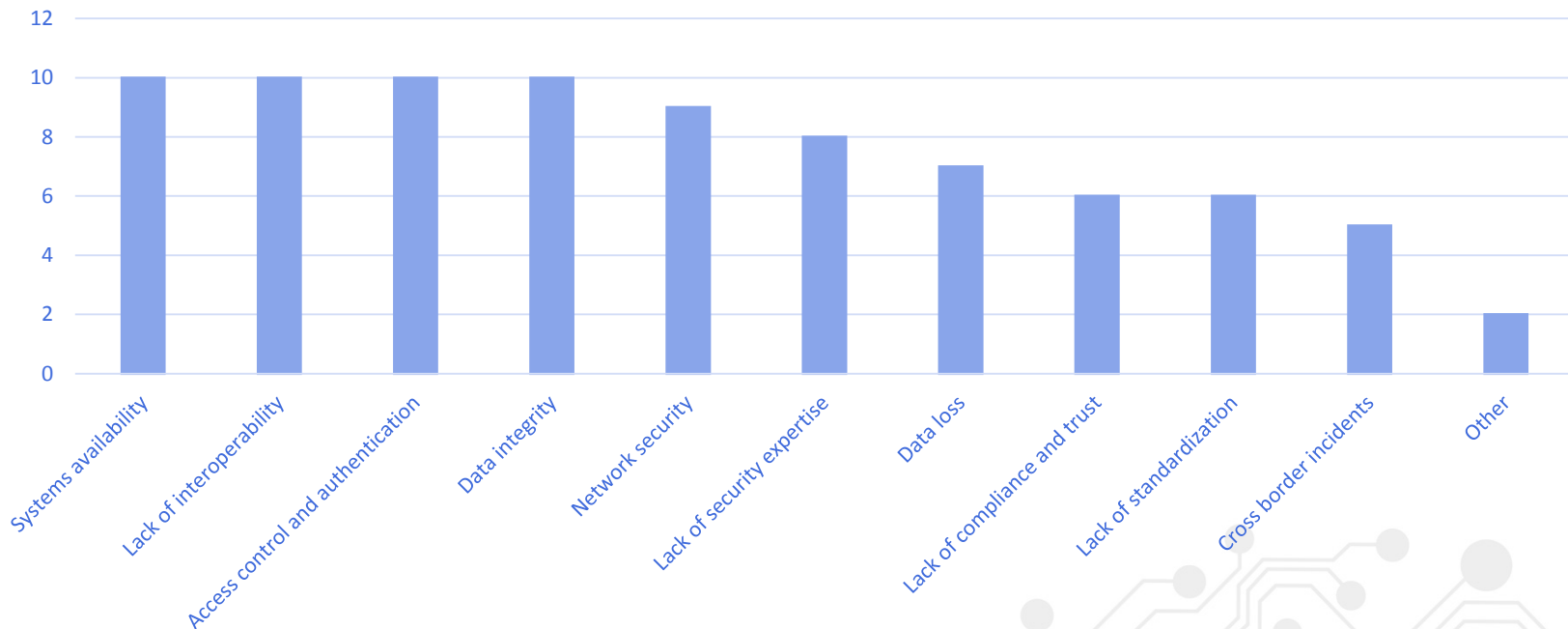
# Network and Information Security Directive



# 2015 study findings: Cyber security Challenges

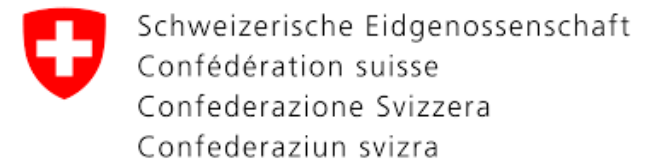


Which do you believe are the most important security challenges in eHealth infrastructures and systems?





# eHealth experts group



**ENISA collaborates with HCO to setup pilots across the EU**



# Thank you



eHealthSecurity@enisa.europa.eu



<https://www.enisa.europa.eu/scada>

