



ENISA: The Netherlands

16 June 2015

Caroline Groot MSc

kadaster
feitelijk verrassend

Cadastral, Land Registry and Mapping Agency

- Parcels
- Topography
- National Geodetic Reference Network
- National facilities:
 - Adresses and Building
 - Spatial Planning
 - **KLIC**
 - RS images
- Open Data Portal



kadaster

Cable and Pipeline Information in the Netherlands

- KLIC: The current situation:
 - Act (WION)
 - Cable and Pipeline Information Portal
 - Set of Information
 - Fact & Figures
- KLIC-WIN: The next step:
 - Improvements WION
 - Incorporation of INSPIRE Utility Networks
 - Incorporation of EC61?



Cables and Pipeline Information Centre

- Intermediary between excavator and cable and pipeline network operators
- Prevention of excavation damage
- Based on Act called WION



kadaster

Motive Act (WION)?

- Newspaper articles:



- Disaster Belgium (July 2004)



- Questions Parliament



kadaster

WION: Underground Cables and Pipelines Information Exchange Act

- Purpose of the act:
to reduce accidents with and damages to cable and pipelines
- Scope of the act:
Excavating in subsoil or water
- Obligations for:
 - Principal
 - Excavator
 - Network operator



kadaster

WION: Underground Cables and Pipelines Information Exchange Act

- **All cable and pipeline companies (1100):**
 - register the locations of their cables/pipelines
 - on top of a **uniformed large scale base map**
 - inform excavators **upon request** about the location and characteristics of their cable and pipelines in the excavation area



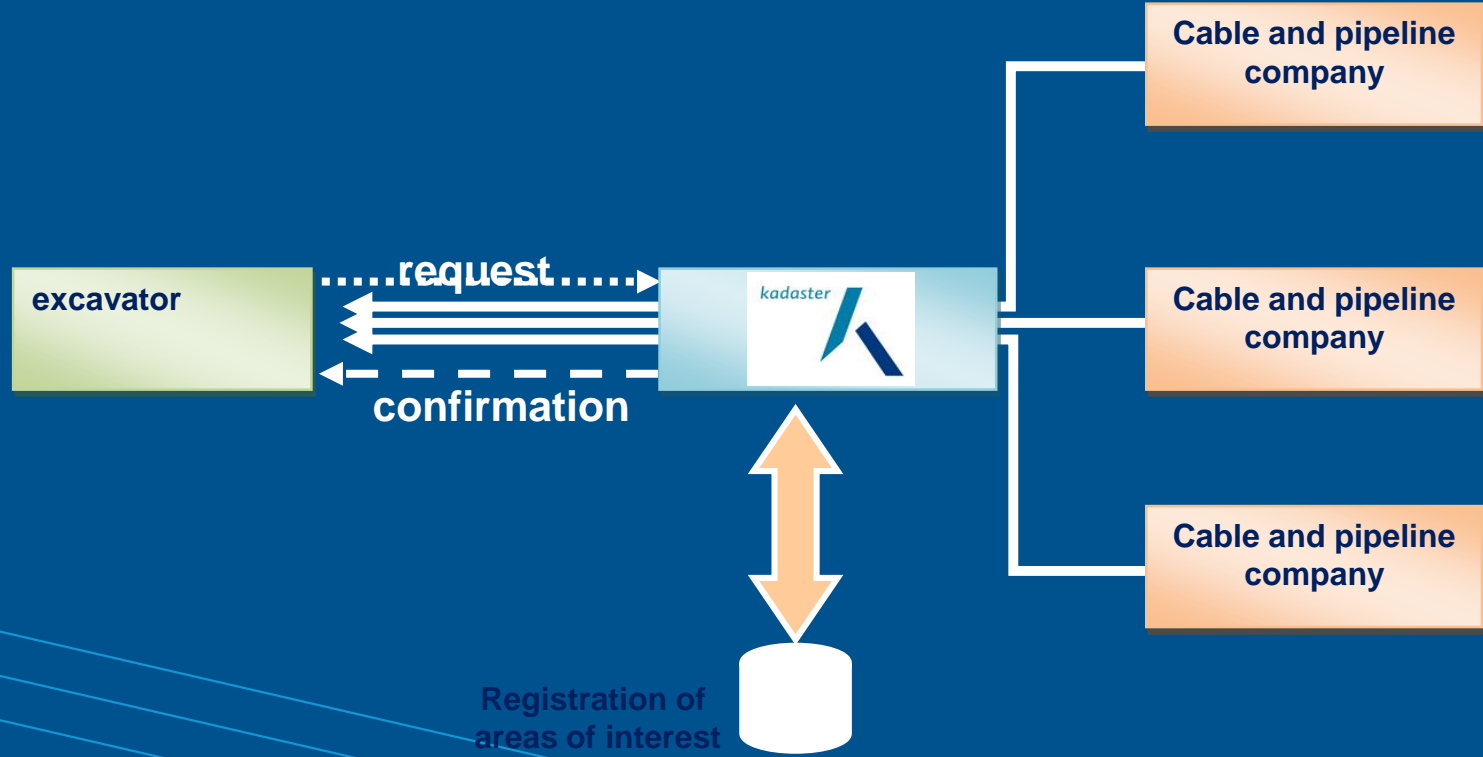
WION: Underground Cables and Pipelines Information Exchange Act (2)

- Duty of the excavator
(contractor/service supply agency/private person)
 - to investigate *before* start to dig and
 - to dig carefully.
- Kadaster acts as intermediary
- Agentschap Telecom acts as supervisor

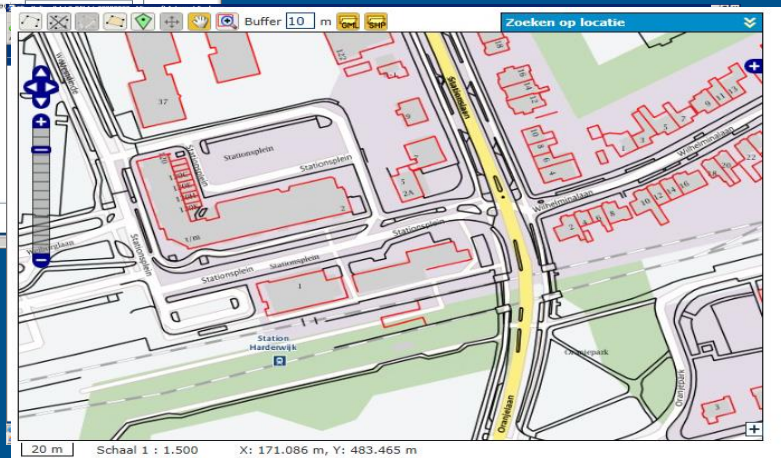
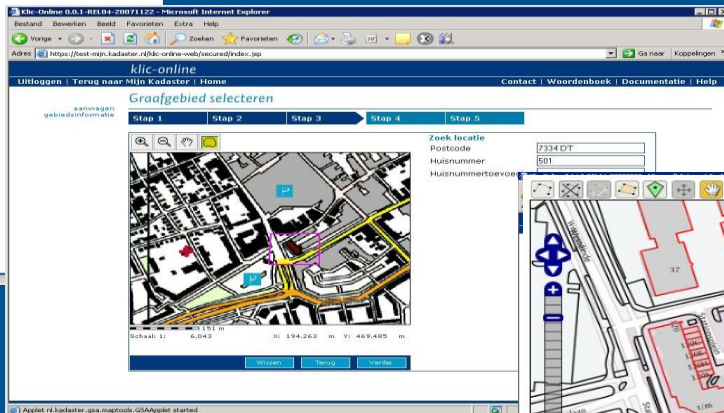
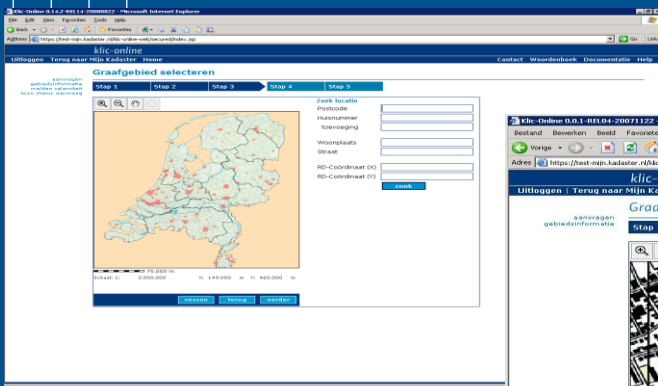
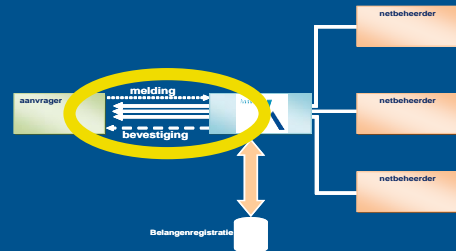


kadaster

WION: Portal for Electronic Exchange of Information



Portal Klic-online



kadaster

Layered information from utility companies / public administrations



Klicnummer: 120003662 - 1	Aanvraagdatum: 26-01-2012	Bladzijde 1 van 9					
Verzamelkaart (alle thema's)							
KPN datatransport	dw water	Ziggo BV datatransport	Erevis gas hoge druk	Erevis laagspanning	Erevis middenspanning	Erevis gas lage druk	egosterhout riool wijkverval

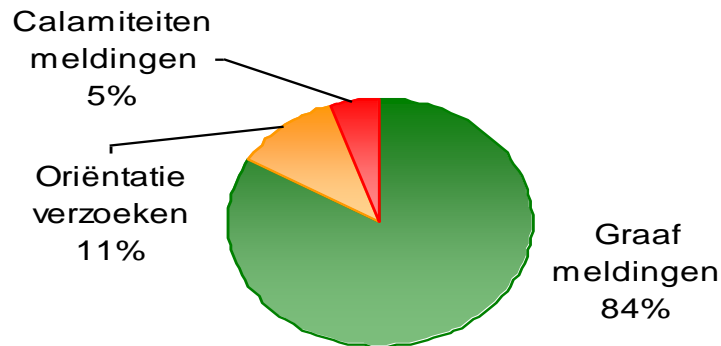
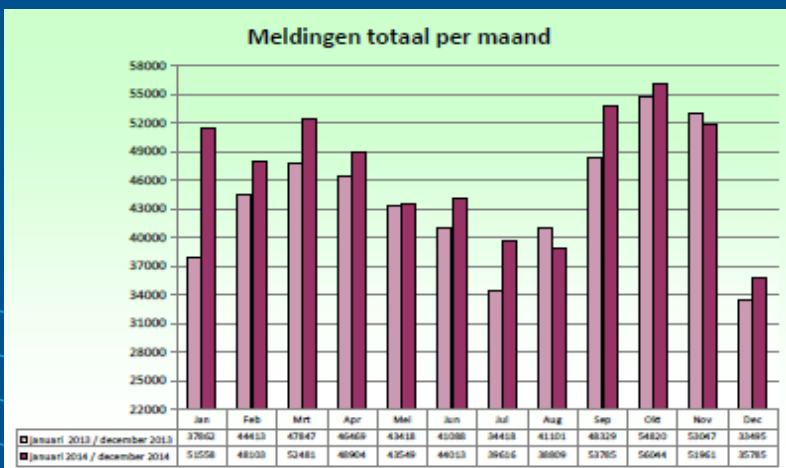


Important features for successful implementation in 2010

- Legal obligation.
- Combined map on top of the large scale base map of the Netherlands.
- Business model.
- Standards implemented (IMKL).
- Regular meetings with stakeholders.

Fact & Figures 2014

- Number of network companies: 1.060
- Number of Excavators: 14.000
- Number of Excavation requests: 560.000





The next step: e-Excavator



kadaster

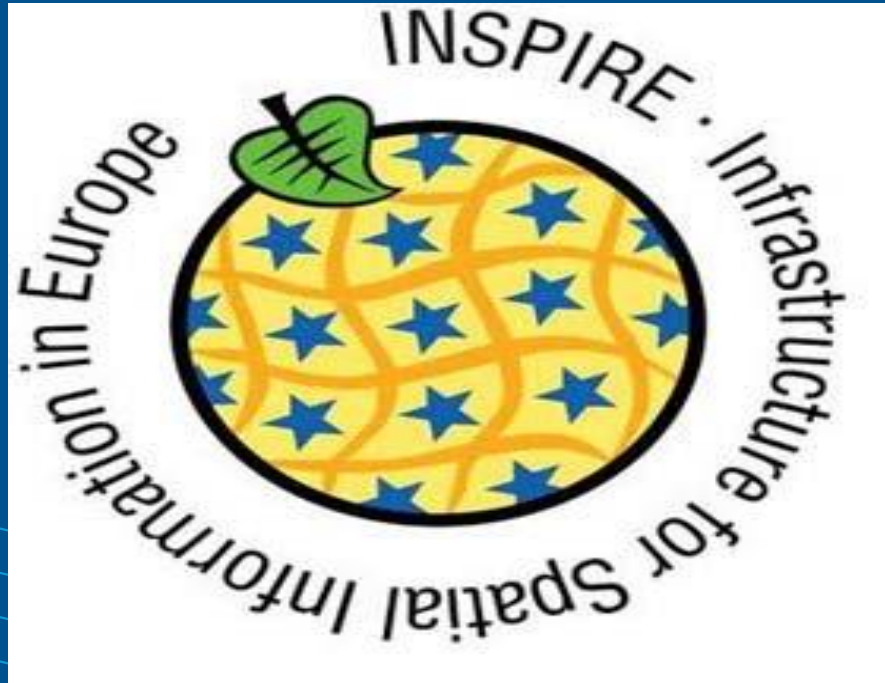
Strategic goals Dutch excavation industry



1. Lesser excavation damages
2. More efficient excavation process
3. Share information about utility networks in other domains

kadaster

Dutch network operators and INSPIRE



- EC-guideline 2007
- Implementation Act
- About 700 network operators are obligatory
- Deadline 1: 3/12/2013
 - Metadata op NGR
 - WMS/WFS met data as is
 - Meeting QoS
- Deadline 2: october 2020
 - Harmonized data

kadaster

KLIC-WIN (2014-2017)



+

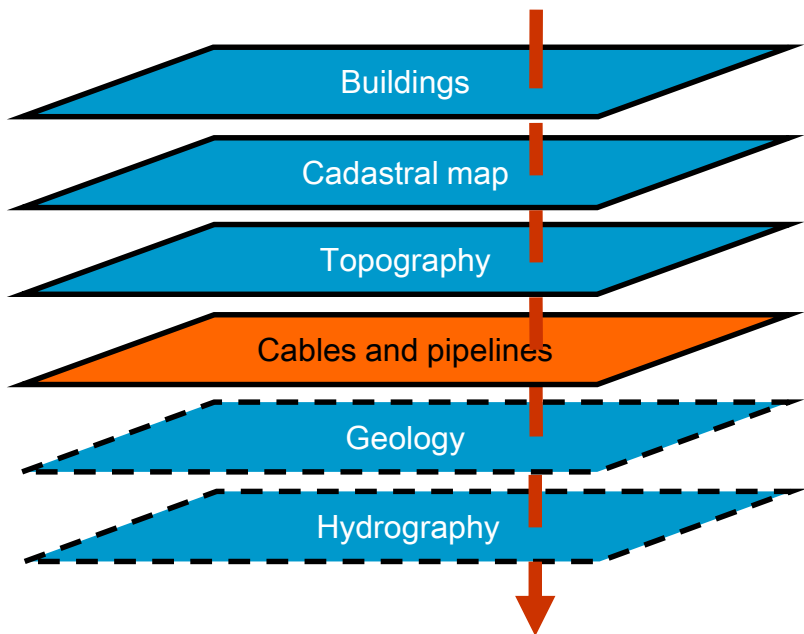


KLIC-WIN

- The excavation sector requires **quality improvements** for preventing excavation damage (WION), in particular the exchange of information about the location of cables and pipelines, via **vector information** and web services.
 - The European INSPIRE directive makes geo-information **accessible** and **available** for European public organizations, citizens, businesses and institutions.
- ➔ **KLIC-WIN:**
Improving quality of KLIC (WION) in combination with expanding the KLIC system with INSPIRE functionality.

*KLIC: Kabel en Leidingen Informatiecentrum
EN: Dutch Cable and Pipeline Information Centre
WION: Wet Informatie-uitwisseling Ondergrondse Netten
EN: Inground Cables and Pipelines Information Exchange Act*

INSPIRE: Digital geo information



 **Leiding**
Thermisch -
NietVanToepassing

geldig
vanaf 01/01/0001

▲ Risicovol
Nauwkeurigheid ligging: Tot 30cm
Waarschuwingmechanisme: Net

Type: HeatingSteam Distributie
Kleur: ● grijs

Diameter: Ø 8 cm

Maximale druk: 3,5 bar

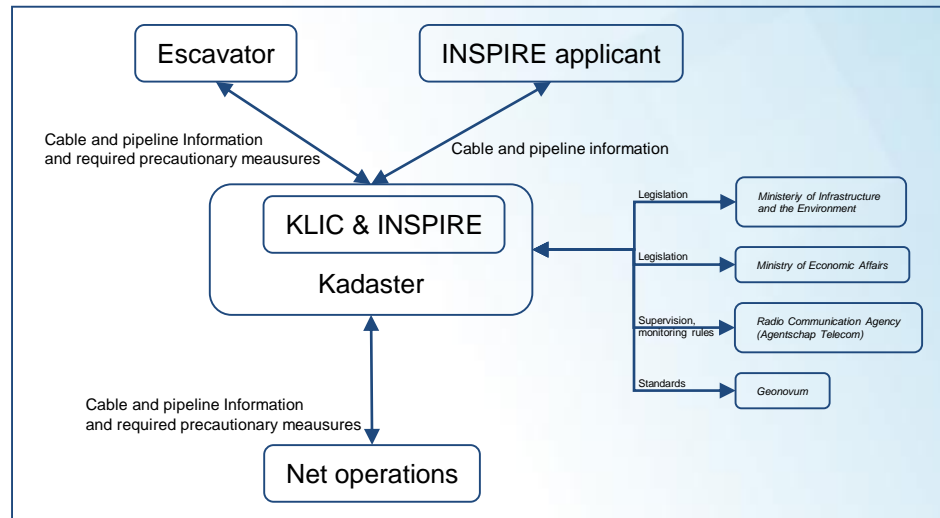
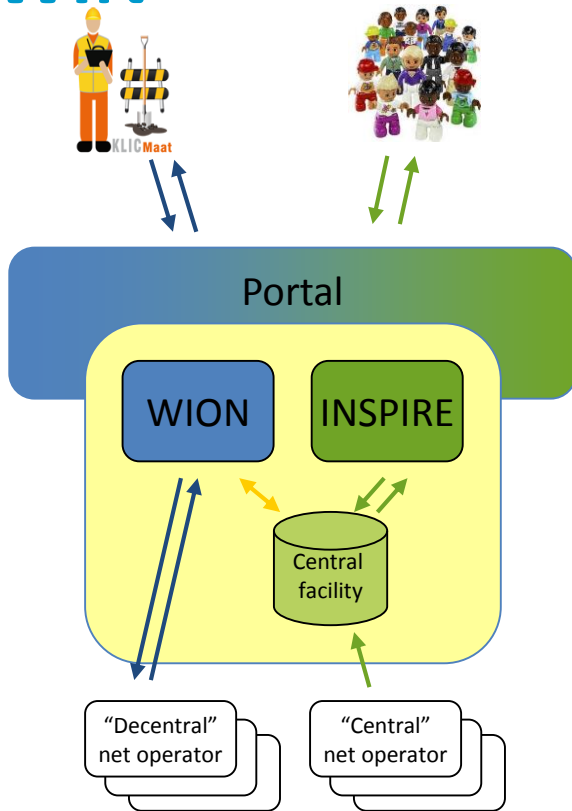
Disclaimer

Contact: **text**
 **text**
 **text**

Bij noodgeval: ☎ 00/000 00 00

..... gepland

KLIC-WIN



Impact for users and net operators

User perspective

- More information (vector, attributes)
- Featuring to combine information (e.g. 3D, environmental legislation, maps for services)
- Information availability (web services)
- Information available for more interested parties

Operation perspective

- Adjusted information
(Municipalities, provinces, Defense, banks, utilities)

Planning KLIC-WIN

2014:

- Q3 2014: decision-making BAO / Steering commity
- Q4 2014: start KLIC-WIN subproject Kadaster

2015:

- Blueprint
- Start realization (sector and Kadaster)
- Start adjusting legislation

2016:

- Realization
- Testing
- Implementing (end-to-end)

*BAO: Bronhouders- en afnemersoverleg
EN: Regular meeting of sector representatieves (net operators and escavotors)*

Questions?

Caroline Groot

E: caroline.groot@kadaster.nl

M: 06-52481738

