



ENISA WELCOME GUIDE

Welcome to the European Union Agency
for Cybersecurity

JANUARY 2025

ABOUT ENISA

The mission of the European Union Agency for Cybersecurity (ENISA) is to achieve a high common level of cybersecurity across the Union, by actively supporting Member States, Union institutions, bodies, offices and agencies in improving cybersecurity. We contribute to policy development and implementation, support capacity building and preparedness, facilitate operational cooperation at Union level, enhance the trustworthiness of ICT products, services and processes by rolling out cybersecurity certification schemes, enable knowledge sharing, research, innovation and awareness building, whilst developing cross-border communities. Our goal is to strengthen trust in the connected economy, boost resilience of the Union's infrastructure and services and keep our society cyber secure. More information about ENISA and its work can be found www.enisa.europa.eu.

AUTHORS

HR Sector - recruitment@enisa.europa.eu

LEGAL NOTICE

This publication represents the views and interpretations of ENISA, unless stated otherwise. It does not endorse a regulatory obligation of ENISA or of ENISA bodies pursuant to the Regulation (EU) No 2019/881.

ENISA has the right to alter, update or remove the publication or any of its contents. It is intended for information purposes only and it must be accessible free of charge. All references to it or its use as a whole or partially must contain ENISA as its source.

Third-party sources are quoted as appropriate. ENISA is not responsible or liable for the content of the external sources including external websites referenced in this publication.

Neither ENISA nor any person acting on its behalf is responsible for the use that might be made of the information contained in this publication.

ENISA maintains its intellectual property rights in relation to this publication. **COPYRIGHT NOTICE**

© European Union Agency for Cybersecurity (ENISA), 2025

This publication is licenced under CC-BY 4.0 "Unless otherwise noted, the reuse of this document is authorised under the Creative Commons Attribution 4.0 International (CC BY 4.0) licence <https://creativecommons.org/licenses/by/4.0/>). This means that reuse is allowed, provided that appropriate credit is given and any changes are indicated".

Cover and other images © shutterstock.com

For any use or reproduction of photos or other material that is not under the ENISA copyright, permission must be sought directly from the copyright holders.

TABLE OF CONTENTS

WELCOME TO ENISA	7
1. WORKING CONDITIONS	8
1.1 THE ROLE OF ENISA	9
1.2 ENISA OFFICES IN GREECE	10
1.2.1 ENISA Athens office	10
1.2.2 ENISA Heraklion branch office in Crete	10
1.2.3 ENISA Brussels branch office in Belgium	10
1.3 FOREIGN EMBASSIES IN ATHENS	10
2. FINDING A PLACE TO LIVE	14
2.1 HOUSING	14
2.2 MONTHLY EXPENSES	15
2.2.1 Heating	15
2.2.2 Internet	15
2.3 NEIGHBOURHOODS AROUND THE ATHENS OFFICE	15
2.4 HOME INSURANCES	15
2.5 LIFE WITH PETS	15
3. FINDING THE RIGHT SCHOOL FOR YOUR CHILDREN	17
3.1 EDUCATIONAL SYSTEM IN GREECE	17
3.2 PRE-SCHOOL EDUCATION	17
3.3 PRIMARY - SECONDARY SCHOOLS	18

4. HEALTHCARE	19
4.1 HOSPITALS	19
4.2 PREGNANCY	19
5. ACTIVITIES FOR PARTNERS AND SPOUSES	20
5.1 FINDING A JOB IN GREECE	20
5.2 STUDYING IN GREECE	20
6. A FEW FACTS ABOUT GREECE	23
7. MOVING AROUND IN ATHENS	24
7.1 PRIVATE TRANSPORT	24
7.1.1 Car/Motorbikes	24
7.1.2 Taxi	24
7.1.3 Cycling	24
7.1.4 Rent a car	24
7.1.5 Insurance	24
7.1.6 Parking at ENISA	24
7.2 PUBLIC TRANSPORT	25
7.2.1 Metro	25
7.2.2 Suburban Railway	25
7.2.3 City Bus	25
8. GETTING SUPPORT AT HOME	26
8.1 CLEANING SERVICES	26
8.2 BABY SITTING SERVICES	26
9. SHOPPING AND EATING	27
9.1 SHOPPING AND MALLS	27
9.2 RESTAURANTS	27
9.3 SUPERMARKETS	27
10.LIFE IN GREECE	29
10.1 WHAT YOU CAN DO AROUND THE OFFICE	29
10.2INTERNATIONAL ASSOCIATIONS	29

10.3 CHILDREN ACTIVITIES	29
10.4 ATHENS SIGHTSEEING	29
A ANNEX: SECURITY AND PERSONAL SAFETY	32
B ANNEX: GENERAL SECURITY NUMBERS IN GREECE	34



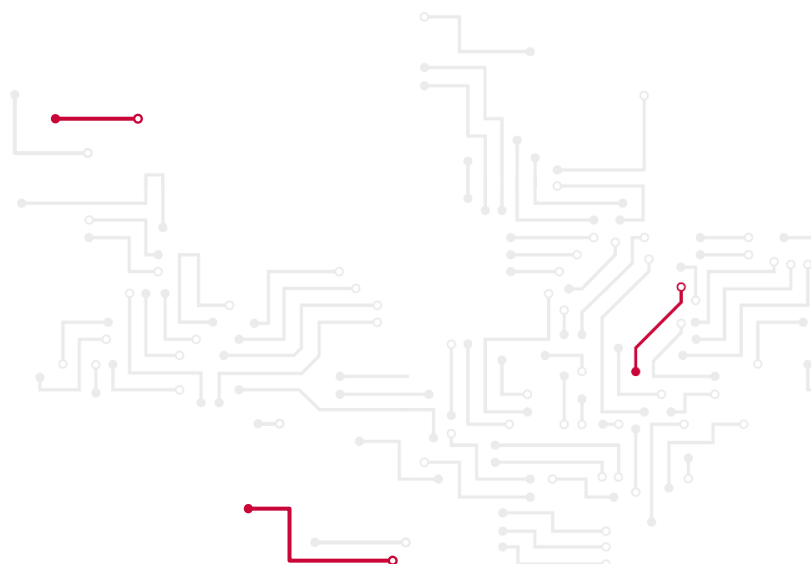


WORKING at ENISA

WELCOME TO ENISA



JUHAN LEPASSAAR
ENISA EXECUTIVE DIRECTOR



Dear new colleague,

A warm welcome to the ENISA team and community.

As an organisation, ENISA strives to accomplish its mission and meet the cybersecurity stakeholders' expectations by being a socially and environmentally responsible Agency that upholds its values of excellence in expertise, openness, innovation and cooperation in all areas of its work.

ENISA relies on every single team member; and I count on you to keep these values close to your heart when exercising your functions.

I encourage you to share with us your experience and unique sides. This is, after all, why we selected you and are so happy that you chose us. We strive to work together with open minds and a great respect of each other's differences, as we strongly believe diversity enriches us as an organisation. Our wide range of backgrounds, and the various ways we can perceive and observe things is what makes ENISA unique. This is our joint strength.

Please take time to enjoy the rich history, nature and social fabric of our host country, Greece. If you are Greek and hence blessed with this knowledge already, now is the time to dwell into the cultural, culinary and linguistic richness of Europe by getting to know your colleagues from across the Union.

I personally welcome you to this new journey at ENISA and look forward to working with you. We are a team and are all here to help you along this new road of discovery.

Best wishes,

Juhan Lepassaar
Executive Director

1. WORKING CONDITIONS

ENISA is all about its people. The people who work at ENISA are key to its success. To deliver its mission, the Agency relies on highly qualified and engaged staff.

The Agency's staff is composed of Temporary Agents (TA) and Contract Agents (CA) who are subject to the European Union Staff Regulations (SR) and Conditions of Employment of Other Servants (CEOS), as well as a range of Seconded National Experts (SNEs), trainees and Interim agents.

Accepting a job at ENISA means not only adjusting to a new working environment, but in most of the cases also to a new country, culture and language. ENISA has prepared this welcome guide to support new staff make a swift transition to their new environment.



1.1 THE ROLE OF ENISA

ENISA is actively contributing to European cybersecurity policy, supporting Member States and European Union stakeholders to respond to large-scale cyber incidents that may take place across borders in cases where two or more EU Member States have been affected. This work also contributes to the proper functioning of the Digital Single Market.

The European Union Agency for Cybersecurity holds a unique and enhanced role under its mandate according to the Cybersecurity Act (Regulation (EU) 2019/881) by contributing to a wide range of activities.

Chapter II of Regulation (EU) 2019/881 – Cybersecurity Act (CSA)

- **Article 5: Development and implementation of Union policy and law**
- **Article 6: Capacity-building**
- **Article 7: Operational cooperation at Union level**
- **Article 8: Market, cybersecurity certification and standardisation**
- **Article 9: Knowledge and information**
- **Article 10: Awareness-raising and education**
- **Article 11: Research and innovation**
- **Article 12: International cooperation**

ENISA also supports the development and implementation of the European Union's policy and law on matters relating to network and information security (NIS) and assists Member States and European Union institutions, bodies and agencies in establishing and implementing vulnerability disclosure policies on a voluntary basis.

Since 2019, following the entry into force of the Cybersecurity Act (Regulation (EU) 2019/881), ENISA has been tasked to prepare the 'European cybersecurity certification schemes' that serve as the basis for certification of products, processes and services that support the delivery of the Digital Single Market.

The European Cybersecurity Act introduces processes that support the cybersecurity certification of ICT products, processes and services. In particular, it establishes EU wide rules and European schemes for cybersecurity certification of such ICT products, processes and services. ENISA is committed to upholding values such as excellence in expertise, openness, innovation, cooperation in all areas of its work.



1.2 ENISA OFFICES IN GREECE

The Agency is located in Athens, Greece and it features a branch office in Heraklion, Greece, which was the original Seat of the Agency.

1.2.1 ENISA Athens office

Eth. Antistaseos 72
Chalandri 152 31
Attiki, Greece
Tel: +30 28 14 40 9711

Please find the detailed description to the ENISA's premises in Athens, [Map – Driving Directions to ENISA's Athens Office](#)

1.2.2 ENISA Heraklion branch office in Crete

Nikolaou Plastira 95
Vassilika Vouton, 700 13 Heraklion, Greece



FIGURE 1: ENISA OFFICES IN ATHENS

1.2.3 ENISA Brussels branch office in Belgium

Rue de la Loi 107, 1000

Brussels, Belgium

1.3 FOREIGN EMBASSIES IN ATHENS

ENISA strongly recommends newcomers to follow the rules of their country of origin on their duty to register at their embassy in Greece. Below you can find the list of foreign Embassies in Athens with their contact details.

Table 1: Embassies in Athens

<p>AUSTRIA 4, Ave Vass. Sofias 10674 Athens Tel: (+30) 210 725 72-70</p>	<p>BELGIUM Odos Sékéri, 3 106 71 Athens Tel: (+30) 210 361 78 86-7</p>	<p>BULGARIA Stratigou Kallari street 33A 154 52 P. Psychico Tel: (+30) 210 6748 105</p>
<p>CROATIA Tzavella street 4 154 51 Neo Psychico Tel: (+30) 210 67 77 037</p>	<p>CYPRUS Xenofontos 2A 105 57 Athens Tel: (+30) 210 373 4800</p>	<p>CZECH REPUBLIC 6, rue Georgiou Séféri Palaio Psychico Tel: (+30) 210 671 37 55</p>
<p>DENMARK Mourouzi 10, 4th floor 106 74 Athens Tel: (+30) 210 725 6440</p>	<p>ESTONIA Messogion Ave. 2-4 Athens Tower, 23rd floor 115 27 Athens Tel: (+30) 210 74 75 660</p>	<p>FINLAND Hatziyianni Mexi 5, 6th floor 115 28 Athens 116 10 Athens Tel: (+30) 210 725 5860</p>
<p>FRANCE 7, avenue Vassilissis Sophias 10671 Athens Tel: (+30) 210 339 12 00</p>	<p>GERMANY Karaoli & Dimitriou 3 106 75 Athen-Kolonaki Tel: (+30) 210 728 51 11</p>	<p>HUNGARY Vas. Constantinou street 38 116 35 Athens Tel: (+30) 210 725 68 00</p>
<p>IRELAND 7, Leoforos Vasileos Konstantinou 106 74 Athens Tel: (+30) 210-723-2771 - 2</p>	<p>ITALY Sekeris 2 106 74 Athens Tel: (+30) 210 361 72 60-3</p>	<p>LATVIA 38, Vas.Konstantinou Ave. 11635 Athens Tel: (+30) 2 10 729 44 83</p>
<p>LITHUANIA 38, Vasileos Konstantinou Ave. 11635 Athens Tel: (+30) 210 72 94 356-57</p>	<p>LUXEMBOURG 23A, avenue Vassilissis Sofias 2 Neofytou Vamva 106 74 Athens Tel: (+30) 210 725 64 00</p>	<p>MALTA 96, Vassilissis Sofias Avenue 115 28 Athens Tel: (+30) 210 778 51 38</p>
<p>NETHERLANDS Leoforos Vasileos Konstantinou 5-7 10674 Athens Tel: (+30) 210-725 4900</p>	<p>POLAND Chryssanthemon Street 22 154 52 Paleo Psychiko Tel : (+30) 210 679 7700</p>	<p>PORTUGAL 23, Ave Vass. Sophias 106 74 Athens Tel : (+30) 210 729 00 61</p>
<p>ROMANIA Emmanouil Benaki 7 Paleo Psychico 15452 Athens Tel: (+30) 210 677 4035</p>	<p>SLOVAKIA 4, Georgiou Seferi 154 52 Paleo Psychico Tel: (+30) 210 6771 980</p>	<p>SLOVENIA 280, ave Kifissias & 1, Dimokratias street 154 51 Neo Psychico Tel: (+30) 210 672 00 90-1</p>
<p>SPAIN Dionisiou Areopagitou street 21 117 42 AthensTel: (+30) 210 921 31 23</p>	<p>SWEDEN Vassileos Konstantinou 7106 74 AthensTel: (+30) 210 72 66 100</p>	-





LIVING

in ATHENS

2. FINDING A PLACE TO LIVE

Short-term rentals are recommended for the first few weeks upon taking up duty, so as to have enough time to discover the neighbourhoods in which you would want to settle. Please bear in mind that newly appointed staff members are subject to a 9-month probation period during which they may receive a daily subsistence allowance payable per day to compensate you for the costs and inconveniences of settling in at the place of work on a provisional basis. The period which the daily allowance can be granted depends on your situation but ends in any case on the date of your removal. The daily allowance may be granted for up to 10 months or 120 days if there are no dependents.

In addition, staff may avail of the installation allowance. The installation allowance is paid to temporary or contract agents who provide proof that they had change their place of residence to meet the requirements of Article 20 of the Staff Regulations.

You may be entitled for reimbursement of removal costs. The reimbursement of removal costs is subject of prior authorisation and we recommend you contact HR for the process clarification.

2.1 HOUSING

There are multiple real estate agents in Athens easily found on the Internet; they tend to specialize in different products and areas. Bear in mind that it is close to impossible to get the exact locations of rentals you might be interested in until an agent actually brings you in for a visit. Do not be surprised if you are asked to sign a document indicating that the agent has exclusivity, should you want to rent the place you are visiting.

Indicative list of websites (we recommend to search in the Internet, as large number of companies operate in this area):

- Spitogatos - <https://en.spitogatos.gr/>
- xe - <https://www.xe.gr/property/en/>
- Blueground - <https://www.theblueground.com/>
- Yestay - <https://yestayhomes.com/rent-apartments-athens-greece>
- Epxat - <https://www.expats.com/en/housing/>
- Bluekey - <https://www.bluekey.gr/en>
- Just Landed - https://housing.justlanded.com/en/Greece_Attica_Athens
- Allabout Property - <https://allaboutproperty.gr/>
- RealEstate24 - <https://realestate24.gr/>
- City properties - https://www.cityproperties.gr/en/houses_for_rent.php?Page=1

For temporary solutions (weeks to months), there are plenty of options around the office from hotels to furnished flats. We suggest that you also have a look at expatriates' websites and classified ads. You should get familiar with the Athens map and in particular with the Chalandri area (where ENISA is located) as traffic can be dense during rush hours.

Long-term rentals can be negotiated directly with the landlord or with the support of real estate agencies (the ads on the websites indicate who placed it, the owner or a real estate agency). Concerning agents' fees, make sure that you negotiate them in advance. These tend to vary between one and two months for long-term rentals. For short-term rentals, if an agent helps you, the fee generally amounts to 10% of the monthly rent. We recommend that you avoid rental

We recommend short-term rentals first, to have enough time to discover the neighbourhoods in which you would want to settle. Long-term rentals (one year and more) can be negotiated directly or through real estate agencies

contracts of longer than 3 years, as they are difficult to discontinue should you decide to change flat within the same area.

All in all, it takes time to settle and we recommend not to bind yourself into a long-term contract without having taken the time to discover the areas and spend a few months living in Greece.

2.2 MONTHLY EXPENSES

Common expenses associated with your accommodation vary greatly depending on size and location. Likewise, water and electricity rates may vary by usage and/or season. As an indicative price, for accommodation you can expect to pay between 5 and 7€ per square meter for large apartments, depending on the area. It should be noted that a seat agreement between ENISA and the Hellenic Authorities further gives privileges for the employees of the Agency within the context of the above expenses. Relevant information shall be provided upon your in-boarding process.

2.2.1 Heating

Heating in Greece is rather expensive and we encourage you to look closely at the availability of gas, oil and solar panels. The bill is included in the **monthly community expenses** (Κοινόχρηστα), which shall be differentiated from the monthly rent. Landlords are generally able to provide past bills as an indication. It should be noted that a seat agreement between ENISA and the Hellenic Authorities further gives privileges for the employees of the Agency within the context of the above expenses. Relevant information shall be provided upon your in-boarding process.

2.2.2 Internet

In some cases, the house offers also Internet services which are included in the monthly expenses (or in the rent). There are many companies that offer internet services and you can find a lot of information online. If the line already exists, it may take up to 15 days after contract signature to provide you with Internet.

2.3 NEIGHBOURHOODS AROUND THE ATHENS OFFICE

The ENISA office is located in the Chalandri neighbourhood in the Northern area of Athens. Chalandri is a large prefecture and is considered as one of the best to live in Athens, together with all the areas surrounding it.

Chalandri has many options for accommodation, as do the following nearby areas: Marousi, Cholargos, Kifissia, Politia, Pefki, Penteli, Melissia and Vrilisia.

Chalandri and Cholargos are trendy with lots of restaurants, bars and Greek night life. Pefki and Melisia are great if you do not want to live next to the office, but still come within half an hour of driving. Penteli is also a residential area and offers spacious houses and nice views from the Penteli Mountain, just like Politia. Kifisia and Vrilisia are family friendly with schools and crèches, expats' community and plenty of activities.

2.4 HOME INSURANCES

Home insurances against fire and break-ins are available. There is no obligation to subscribe to one though.

2.5 LIFE WITH PETS

Athens is a pet-friendly city, especially in the northern suburbs. There are excellent veterinarians close to the Office (colleagues with pets can give you recommendations). Most of the tourist infrastructure is also pet-friendly, but do check beforehand to avoid surprises. We also recommend you to familiarise yourself with the European Regulations on Pet Travel.

AROUND THE OFFICE

The ENISA office is located in the Chalandri neighbourhood in the Northern area of Athens. Chalandri is considered as one of the best to live in Athens, together with all the areas surrounding it.



3. FINDING THE RIGHT SCHOOL FOR YOUR CHILDREN

Under certain conditions and budget availability, ENISA covers crèche costs for up to 600 EUR per month per child. Important factors to consider are accessibility, entry age requirements, and food.

3.1 EDUCATIONAL SYSTEM IN GREECE

The education system in Greece is administered by the Ministry of Education and Religious Affairs. The Ministry exercises centralised control over state schools including dictating curriculum, appointing staff and controlling funding. Private schools also fall under the mandate of the Ministry. State-run education is free, including tuition and textbooks.

3.2 PRE-SCHOOL EDUCATION

There is a significant number of nursery schools around the office, several of them with English-speaking groups.

Greek parents should have no difficulty finding Greek-speaking institutions. ENISA do not recommend any schools, however a non-exhaustive list of nursery & pre-primary schools is mentioned below:

- Natasha babyland and wonderland: Kifisia. English group as from 1-year-old. Daily cooked meals. Closes during holidays. <https://www.natashaswonderland.gr/default.asp>
- Melina's kindergarten, in cooperation with the International School of Athens (American college). Kifisia, English group as from 2,5-year-old. Open all year. <https://isa.edu.gr/melina>
- Learning Home, Montessori kindergarten in Kifisia. English group as from 2.5 years old. <https://www.mylearninghome.gr/>
- Flopsy Bunnies Playgroup - English Nursery Kindergarten, just 110m walking from Enisa offices - <http://www.flopsybunnies.gr/en/>
- Cottage Kindergarten in Halandri <http://www.cottage.gr/>
- Children's college <https://www.childrenscollege.gr>
- ABC Nursery school www.abcschool.gr

Greek national nursery schools are free of charge for Greek speaking children. Have a look in the neighbourhood around your house or ask the landlord for more information. There are several **Greek speaking** private nursery schools:

- [Leonteios Scholi \(Lycee Leonin\) nursery school](#)
- [Arsakeios Scholi nursery school](#)
- [Doukas nursery school](#)
- [Ionios Scholi nursery school](#)
- [Montessori school](#)

FIGURE 2: EDUCATIONAL SYSTEMS COMPARISON

More information can be found online.

3.3 PRIMARY - SECONDARY SCHOOLS

There are multiple international schools around ENISA.

<p>American Community Schools, ACS (US) 129 Aghias Paraskevis Str., Halandri +30 210 6393200 https://www.acs.gr/</p>	<p>Byron College (UK) 7 Filolaou Str., Gerakas +30 210 6047722 https://www.byroncollege.gr/</p>
<p>Campion School (UK) Aghias Ioulianis 2, Pallini +30 210 6071721 https://www.campion.edu</p>	<p>Deutsche Schule Athen (DE) Dimokritou 6 & Ziridi, Maroussi Deutsche Schule Athen (dsathen.gr)</p>
<p>International School of Athens (ISA) Xenias and Artemidos, Kifissia +30 210 6233888 https://isa.edu.gr/</p>	<p>Lycée Franco-Hellénique Eugene Delacroix (FR) 15301 rues Chlois & Trikalon, Agia Paraskevi +30 211 3009100 https://lfh.edu.gr/</p>
<p>St. Catherine's British School (UK) https://www.stcatherines.gr/</p>	<p>The American College of Greece (also Pierce College) (US) https://www.acg.edu/</p>

Table 2: non-exhaustive list of primary and secondary international schools

Greek speaking colleagues can choose between sending their kids to the public school of the neighbourhood or to a private school. ENISA do not recommend any schools, however a non-exhaustive list of primary and secondary school is mentioned below:

- Leonteios Scholi (Lycee Leonin) school: <https://www.leonteios.gr/>
- Arsakeios Scholi school: <https://www.arsakeio.gr/gr/>
- Doukas school: <https://doukas.edu.gr/>
- Ionios Scholi school: <https://ionios.gr/english>
- Athens College: <https://www.athenscollege.edu.gr/>

You can also find more information online.



4. HEALTHCARE

4.1 HOSPITALS

There are multiple public and private hospitals and medical centres around ENISA. Athens has many hospitals, a directory of which are shown [here](#). In addition, you may consult the following link for a doctor database that covers different specialities, [here](#).

4.2 PREGNANCY

Although babies born in Greece do not hold the Greek nationality, they must be registered in the municipality registry days after the birth, where the birth certificate is issued for parents to claim the new-born's identity documents from their respective consulates. The procedure requires the translation in Greek of official documents (marriage certificate for instance) so as for the Greek local authorities to be able to process the names of the baby and the parents and issue the birth certificate.

5. ACTIVITIES FOR PARTNERS AND SPOUSES

5.1 FINDING A JOB IN GREECE

Depending on the background and professional activities, partners and spouses of ENISA Staff can find a job through [LinkedIn](#) or websites with ads like:

- www.kariera.gr
- www.jobstoday.gr
- <https://ergasia.gr/>

5.2 STUDYING IN GREECE

University studies in Greece take place in Greek, however there are many international programs for Master degrees or even Bachelors. Here are some national universities in Athens that offer international programs (list is not exhaustive):

Athens University of Economics and Business (AUEB) https://www.aueb.gr/en	National and Kapodistrian University of Athens https://en.uoa.gr/
National Technical University of Athens (NTUA) https://www.ntua.gr/en/	University of Piraeus https://www.unipi.gr/unipi/el/
Hellenic American College https://www.haec.gr/el	Alba Graduate Business School https://alba.acg.edu/

Table 3: List of Universities in Athens



The background is a solid green color with a white, intricate circuit board pattern. The pattern consists of numerous small circles (representing components or nodes) connected by thin, white lines that form a complex, maze-like network of paths.

Leisure time

6. A FEW FACTS ABOUT GREECE

The host Member State, Greece is considered the cradle of Western civilization, being the birthplace of democracy, Western philosophy, the Olympic Games, Western literature, historiography, political science, major scientific and mathematical principles, and Western drama.

Athens is the capital and largest city in Greece. It is one of the oldest cities, with its recorded history spanning over 3,400 years and its earliest human presence starting somewhere between the 11th and 7th millennium.

Athens is a global city and one of the biggest economic centers in South-eastern Europe. It has a large financial sector, and its port Piraeus is both the largest passenger port in Europe, and the second largest in the world.



7. MOVING AROUND IN ATHENS

7.1 PRIVATE TRANSPORT

7.1.1 Car/Motorbikes

Athens is a city which often suffers from traffic jams. If you choose to move around with your car/motorbike. We advise you to check the traffic online for the specific route you want to follow. In view of the traffic, it is advised to be very cautious while driving around in Athens. Parking is also an issue (for cars) especially in the city center. If you choose to use your car it is advised to look for a secure parking instead of parking the car in a dangerous area. For motorbikes, designated areas for parking can be found around the whole city. If you are driving during late hours, alcohol controls take place regularly especially in the city center, and the fines are very high.

7.1.2 Taxi

Taxis (yellow in Athens) can be a more convenient mean of transportation. While many taxi drivers are excellent professionals, it may be helpful to make use of a GPS application in case the taxi driver is not familiar with the destination.

7.1.3 Cycling

Athens is not a cycling friendly city due to the heavy traffic during rush hours. It is advised to use a bike only for short distances and to be very careful. However, in north Athens where Chalandri is located, the use of bicycle is better than downtown.

7.1.4 Rent a car

In addition to the well-known international car hire companies there are also many small local companies.

Some important points to note when hiring a car in Greece;

- Pay particular attention to the terms and conditions that apply to insurance.
- You must have held a valid driving license for at least 1 year.
- If your driving license is not in English or Greek, an International Driving License must also be produced.

Some recommended sites for more information:

- <https://www.avis.gr/en/>
- <https://www.budget.gr/>
- <https://www.europcargreece.com/>
- <https://www.hertz.gr/>

7.1.5 Insurance

Not all insurance companies cover cars with diplomatic plates. Whenever you buy insurance for your car (regardless of the type of plates), make sure that the following cases are included: theft, semi-theft, breaking glasses, terrorist attack, hit by uninsured vehicle.

7.1.6 Parking at ENISA

DRIVING YOUR CAR IN ATHENS

Athens is a city which often suffers from traffic jams. If you choose to move around with your car/motorbike, we advise you to check the traffic online for the specific route you want to follow. Parking spots at ENISA's premises are limited and follow the rule "First come, first served".

Parking spots at ENISA premises are limited and follow the rule “First come, first served”.

7.2 PUBLIC TRANSPORT

7.2.1 Metro

There are two metro lines (Blue and Red lines) and one domestic (Green Line) rail line available in Athens. The lines run regularly (3-7 mins depending on the time). The ticket for all these means of transport is the same: it costs 1,20 € for a 90 min fare. You can buy tickets from Stations and from designated kiosks. Athens underground connects important landmarks of the Greek capital, such as the Acropolis, Athens Airport, Port of Piraeus, Central Railway Station and Olympic Stadium, in addition to connecting downtown Athens with the suburbs. All stations are fully accessible to disabled persons with elevators at every level and platform. Most of the trains are air-conditioned.

For operations and timetable, and to access online apps showing the public transport frequency etc. please visit OASA website: <https://www.oasa.gr/en/>

Note: ENISA’s building in Chalandri is located about 18’ walk from the Holargos (Χολαργός) metro station (blue line).

7.2.2 Suburban Railway

The Suburban Railway (yellow line), or “Proastiakos”, is part of the national railway network of Greece. Its main route is **Athens Airport** – Kiato, while other routes travel up to Ano Liosia. There is also a route that connects Ano Liosia with the Athens Central Station as well as a route that connects the town of Halkida (Chalkis) with the Acharnai Station (S.K.A.), the Athens Central Station and Piraeus Station.

7.2.3 City Bus

City buses and electrical trolley-buses serve Athens and its suburbs. Most vehicles are modern and air-conditioned. Special schedules apply during the summer months of July-September. Operating hours vary according to line/day/season, but generally they run between 5:00 a.m. – midnight. There are also five 24-hour lines, 4 airport lines and 8 Express lines. You can find all information you need at OASA website: <https://www.oasa.gr/en/>

Note: Lines A7 and 550 have stops close to the office, bus stop Arsakeio (4’ walk) and provide connection to Athens. Please note, during the rush hours, the transfer with buses takes longer

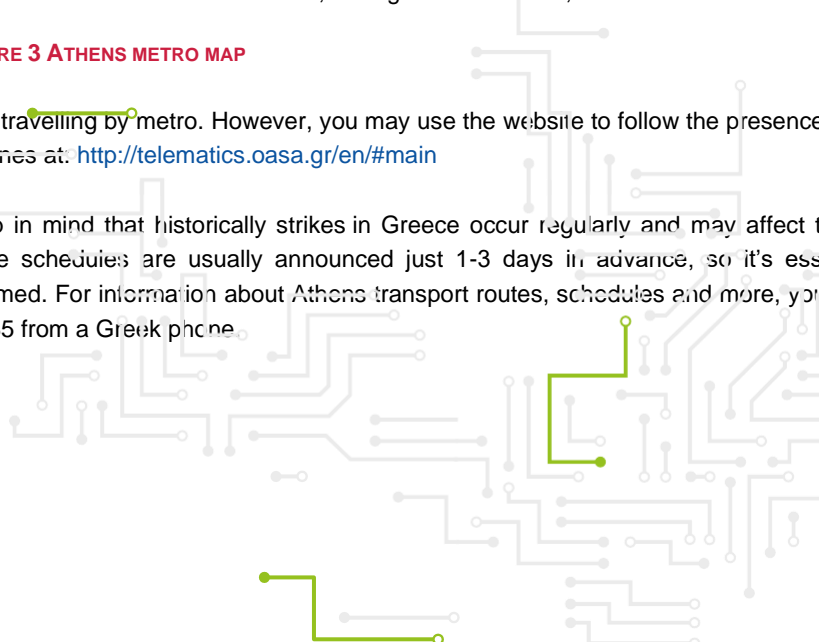
FIGURE 3 ATHENS METRO MAP

than travelling by metro. However, you may use the website to follow the presence of busses on the lines at: <http://telematics.oasa.gr/en/#main>

Keep in mind that historically strikes in Greece occur regularly and may affect transportation. Strike schedules are usually announced just 1-3 days in advance, so it’s essential to stay informed. For information about Athens transport routes, schedules and more, you can also call 11185 from a Greek phone.

Consider downloading the GR public transport app OASA telematics.

For ENISA the most convenient stop near the office is Holargos (on blue line) and then about 18’ walk).



8. GETTING SUPPORT AT HOME

8.1 CLEANING SERVICES

Cleaning services are very common in Greece, usually based on word-of-mouth referrals. Your landlord, neighbours, or colleagues might be able to assist you to find the right cleaning service.

8.2 BABY SITTING SERVICES

Babysitters in Greece are very common. We recommend that you pay nannies using vouchers issued at the post office, which guarantees them healthcare coverage, however the normal payment methods are also available. Both are generally recommended on word of mouth, ENISA colleagues will be able to provide more information when you arrive. You can also hire one online for example: www.nannuka.com, etc.



9. SHOPPING AND EATING

9.1 SHOPPING AND MALLS

The commercial shops in Athens follow a specific schedule: Monday and Wednesday 9:00-14:00, Tuesday, Thursday and Friday also open in the afternoon 17:00-20:00 (in summertime until 21:00). In the city centre some shops stay open during lunchtime as well.¹

Athens is excellent for shopping, boasting a lot of commercial streets in every neighbourhood, from vintage shops and local design stores, to mini-markets and little shops with traditional products. There are also shopping malls, most of them located in the North part of the city. The largest one is the Mall for mid-range and the most elegant is the Golden Hall for high-end brands.



There are also outlet centers for those who seek brand names and designer labels at low prices 15 minutes from Athens International Airport.

9.2 RESTAURANTS

Restaurants are relatively cheap in Athens. You will be able to find options for all tastes, Greek and international; traditional and fusion cuisines; for meat-lovers and vegans. Local restaurants are called tavernas where live music can sometimes be heard. Normally Greeks have lunch at 13:30-14:30 which can take up to 3-4 hours; dinner can be served as from 19:00 but Greeks eat around 21:00. It is advised to book a table, especially during the weekend. Tips are not included. You can find all information on restaurants in [Athinorama](#) and in [e-table](#).

Athens has a strong delivery culture; almost all cafeterias and restaurants deliver food/coffee at your place. For more information on what can be delivered visit: [efood](#) and [Wolt](#).

There is no canteen at ENISA but every floor has a kitchenette with refrigerators, microwave ovens where you can store, heat and serve your food and eat. Most staff alternate between home-cooked meals they bring and dishes they order from local restaurants.

9.3 SUPERMARKETS

Athens has large supermarket chains, but also small markets supporting neighbourhoods. Some examples of supermarkets that can be found in Athens:

DINING IN ATHENS

Restaurants are relatively cheap in Athens. You will be able to find options for all tastes, Greek and international; traditional and fusion cuisines; for meat-lovers and vegans. Local restaurants are called tavernas. Athens has a strong delivery culture, almost all cafeterias and restaurants deliver food/coffee at your place.

¹ Not applicable to Athens downtown area and shopping centres.



In many cases super markets deliver goods to your house. For more information check their website.

Open air markets, Laiki agora for groceries take place every day. Find the one close to you here



Organic farmer markets also take place every day, find more information here



10. LIFE IN GREECE

10.1 WHAT YOU CAN DO AROUND THE OFFICE

Chalandri is an up-and-coming neighbourhood with lively cocktail bars and cafes on shady pedestrian streets around St. Nicholas church. Local restaurants, dishing up classic Greek dishes and meze, to global flavours, spill out into leafy courtyards, giving the area a village feel. A diverse shopping scene encompasses bookshops, quirky fashion boutiques and gift and homeware stores.

10.2 INTERNATIONAL ASSOCIATIONS

There are plenty of international associations that your Embassy and ENISA Colleagues can recommend. For instance: Athènes Accueil, for French speakers:

<http://www.athenesaccueil.com/>

10.3 CHILDREN ACTIVITIES

Athens and in particular the neighbourhoods around the office, are kids-friendly, and feature lots of public and private parks with fun activities for your children. Kindergarten and schools generally offer extra-scholar activities such as cooking or music classes.

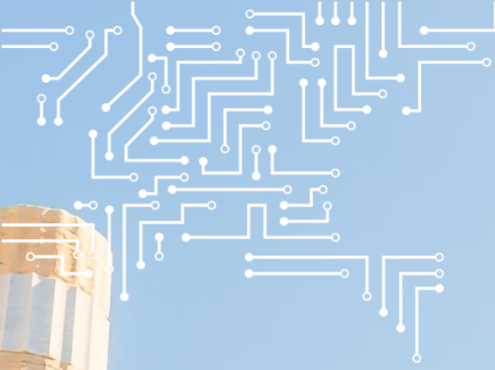
10.4 ATHENS SIGHTSEEING

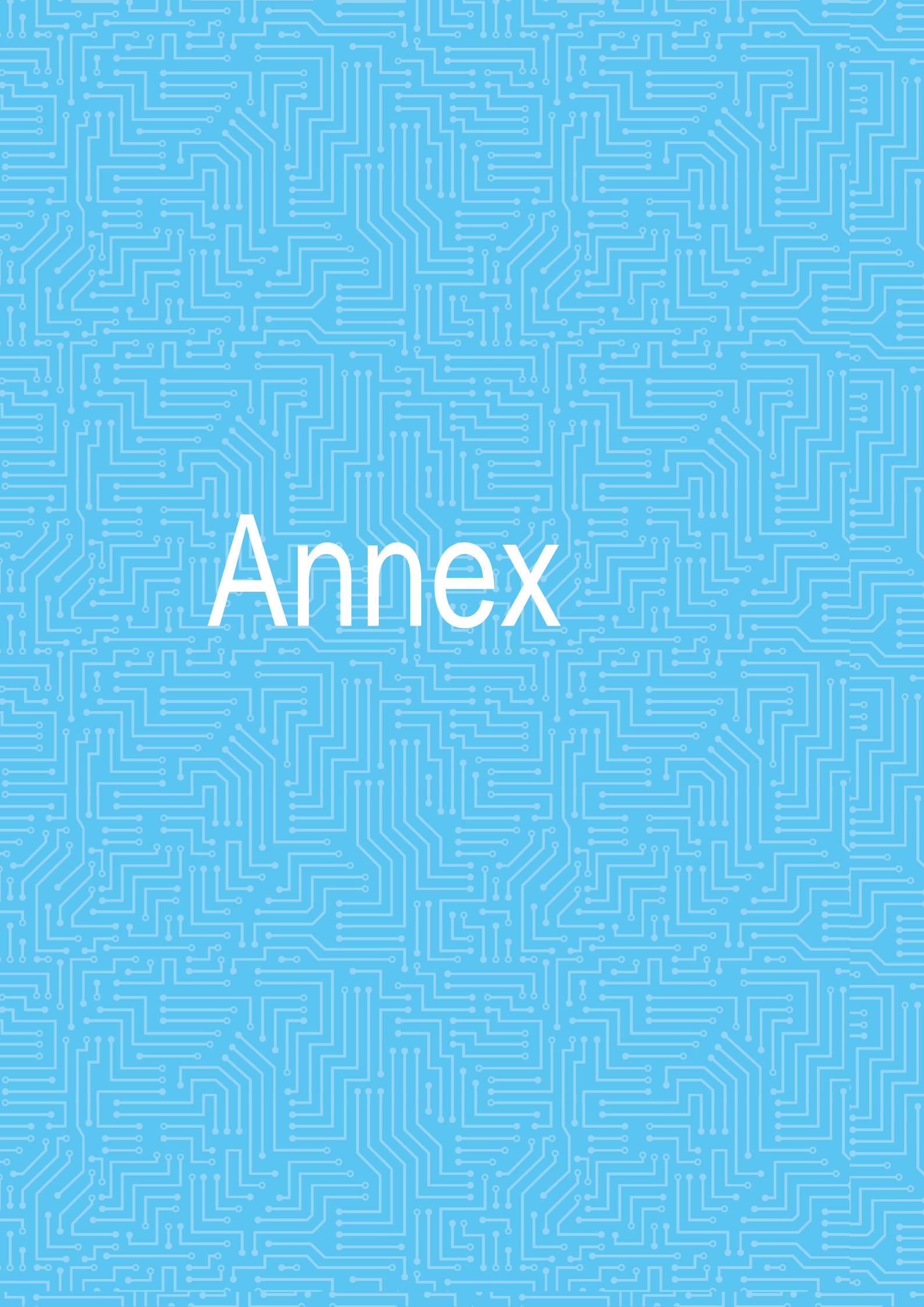
Athens was the ancient capital of the Greek civilization, making it a very interesting tourist attraction throughout the whole year. Archeological sites, museums, art spaces are dispersed in the city. Some of the most famous sites are: Akropolis and Parthenon, Akropolis Museum, Odeon of Herodes Atticus, Temple of Olympian Zeus, National Gardens and Constitution sq, Zappeion Palace, Doridis astronomic observatory, National Archeological Museum, Mpenaki museum and many more can be found [here](#).

You may get your free ATHENS guide, published by the Greek National Tourism Organisation here:



We invite you to download the guide in your mobile device and use it offline on a self-guided walking tour in Athens





Annex

A ANNEX: SECURITY AND PERSONAL SAFETY

Planning for personal safety is identifying and avoiding as many risks as possible. The primary purpose of this section is to highlight general risks or dangers associated with travelling abroad. A more detailed personal and organisational security briefing will form part of your induction.

General Precautions

- Personal Travel insurance is highly recommended
- Make photocopies of your passport, driver's license, medical insurance and airline tickets for reference in the event of losing the originals
 - It is generally a good idea to add key telephone numbers (such as ENISA office, consulate, hotel, taxi etc.) before departure.
 - Know the location and contact information for your consulate in your area of travel.
 - Always carry your passport with you when travelling. Never place your passport or other important/sensitive documents in your checked luggage.
 - Travel in casual dress and leave conspicuous items such as jewellery, gold watches and expensive luggage at home. Valuables tend to attract unwanted attention.
 - Never take photos of anyone without their permission or of any military or official staff or buildings.
 - Do not under any circumstances exchange money illegally – use a bank or official currency exchange.
 - Do not carry more cash than you need for the moment.

Airport Security

- If being met at the airport, know the name(s) of the persons meeting you and get a rough physical description. Do not accompany anyone who does not fit the description or claims to have been sent in place of the person you expected unless this can be verified.
 - Only engage with licensed service providers, for instance only use taxis from the airport taxi rank, and do not engage with private taxi providers or unmarked taxis.

Vehicle Security

- It is safer to keep windows closed and doors locked while driving. Always close and lock your vehicle when parked.
 - Valuable items should not be visible from the outside of the vehicle. If you must travel with valuable items, lock them in the boot. Never leave your purse or wallet in the vehicle.

Vehicle Travel

- Do not use unmarked taxis.
- Keep the vehicle's hood, boot and fuel cap secured.
- Keep doors and windows locked at all times.
- Never pick up hitchhikers or strangers.

SECURITY & PERSONAL SAFETY

Planning for personal safety is identifying and avoiding as many risks as possible.

- Always be mindful of your surroundings; trust your instincts.
- It is safer to keep windows closed and doors locked while driving. Always close and lock your vehicle when parked.

- Park your vehicle in a well-lit area. Whenever approaching your vehicle, make sure that no one is near the vehicle, underneath or inside.

Street Security

- Always be mindful of your surroundings; trust your instincts.
- Remember, you may be a target for pickpockets or worse.
- Clutch briefcases or handbags tightly. Place wallets in your front trouser or inside jacket pocket.
- Keep a low profile in terms of behaviour, voice and dress.
- Avoid deserted streets or walking alone, especially at night.
- Shop in reputable, well-known stores and avoid street vendors.

Many EU countries consulates issue guidelines for travelling to abroad, below an indicative list of recommendations. Have a look in the online portals of the consulates of your country for advisories on Greece.

- Belgium http://diplomatie.belgium.be/fr/Services/voyager_a_letranger/conseils_par_destination/
- France <http://www.diplomatie.gouv.fr/fr/conseils-aux-voyageurs/conseils-par-pays/>
- Germany http://www.auswaertiges-amt.de/DE/Laenderinformationen/LaenderReiseinformationen_node.html
- Netherlands <http://www.rijksoverheid.nl/onderwerpen/reisadviezen/inhoud>
- Poland: [Informacje dla podróżujących - Ministerstwo Spraw Zagranicznych - Portal Gov.pl \(www.gov.pl\)](#), [Odyseusz \(msz.gov.pl\)](#)

B ANNEX: GENERAL SECURITY NUMBERS IN GREECE

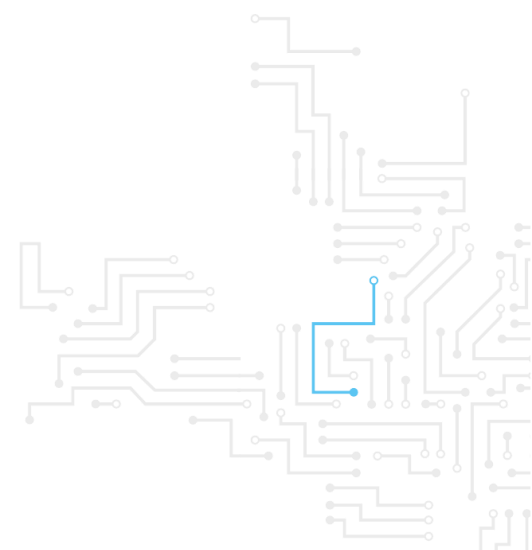
Emergency Service	Telephone
Medical Emergency (Αριθμός έκτακτης ανάγκης)	Tel: 112
Fire Service (Πυροσβεστική Υπηρεσία)	Tel: 199
Ambulance service (Εθνικό Κέντρο Αμεσης Βοήθειας)	Tel: 166
Police (Άμεση Δράση Αστυνομίας)	Tel: 100
Tourist Police (Τουριστική Αστυνομία)	Tel: 171

TABLE 4: EMERGENCY NUMBERS

B.1 EUROPEAN SOS 112

The number 112 can be dialled to reach emergency services - medical, fire and police - from anywhere in Europe. This Pan-European emergency number 112 can be called from any telephone (landline, pay phone or mobile cellular phone). Calls are free. It can be used for any life-threatening situation, including:

- Serious medical problems (such as accident, unconscious person, severe injuries, chest pain, seizure)
- Any type of fire (house, car)
- Life-threatening situations (crimes)
-





ABOUT ENISA

The mission of the European Union Agency for Cybersecurity (ENISA) is to achieve a high common level of cybersecurity across the Union, by actively supporting Member States, Union institutions, bodies, offices and agencies in improving cybersecurity. We contribute to policy development and implementation, support capacity building and preparedness, facilitate operational cooperation at Union level, enhance the trustworthiness of ICT products, services and processes by rolling out cybersecurity certification schemes, enable knowledge sharing, research, innovation and awareness building, whilst developing cross-border communities. Our goal is to strengthen trust in the connected economy, boost resilience of the Union's infrastructure and services and keep our society cyber secure. More information about ENISA and its work can be found www.enisa.europa.eu.



ENISA

European Union Agency for Cybersecurity

Athens Office

Agamemnonos 14
Chalandri 15231, Attiki, Greece

Heraklion Office

95 Nikolaou Plastira
700 13 Vassilika Vouton, Heraklion, Greece

Brussels Office

Rue de la Loi 107
1049 Brussels, Belgium



enisa.europa.eu

